

Reversica

Use space better.

Gyre 6300 flat screen concealment hardware.

“It’s like adding another room to your house.”

That’s what Cynthia Miyashita, president of custom fine furniture company Berkeley Mills, said when she saw the Gyre in action.

And after she saw the Gyre turn, she couldn’t stop smiling.

With a motion as easy as opening a door, the top case of the entertainment center swung forward and around, twisting 180 degrees in a slim 18” depth, and came back to its original resting place—only reversed.

The plasma screen is replaced by a bookcase with 12 linear feet of shelf space lined with New York Times bestsellers.

The Gyre 6300 doesn’t just hide your flat screen TV—it doubles the function of your room.

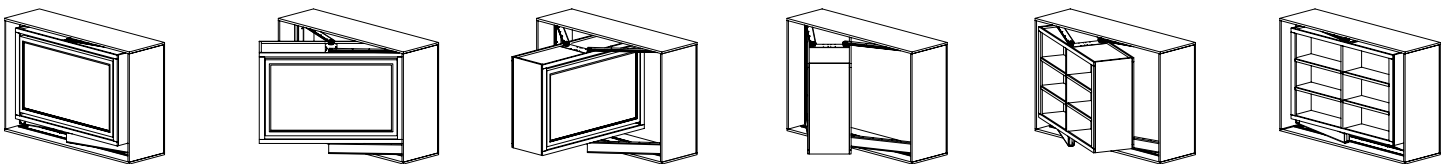
Imagine...

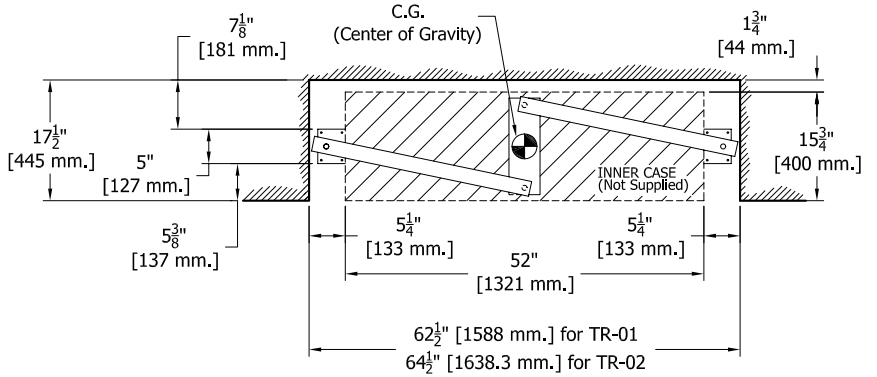
Book club night? Display a bookcase, stocked with classics. Big football game in the morning? Twist your bookcase around to display your 50” plasma screen and have everyone over to cheer for the home team. Your quiet library becomes a home theater room. It really is like adding another room to your house.

Disguise your entertainment center in any style with a motion never seen before. Reinvent your living space.

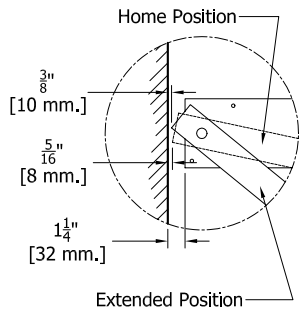
The Gyre 6300. From Reversica.

Use space better.

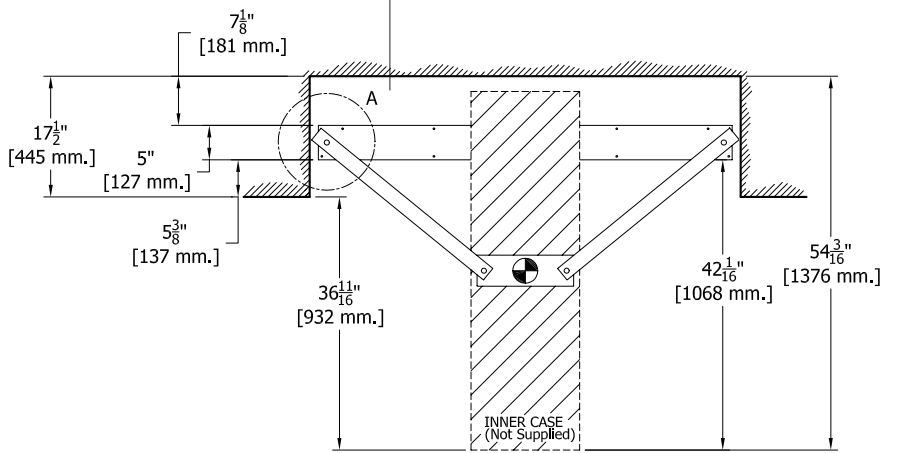




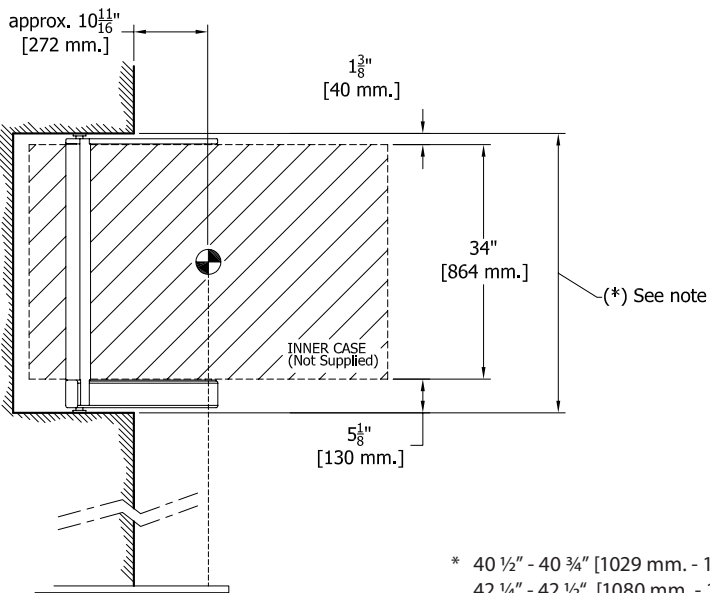
top



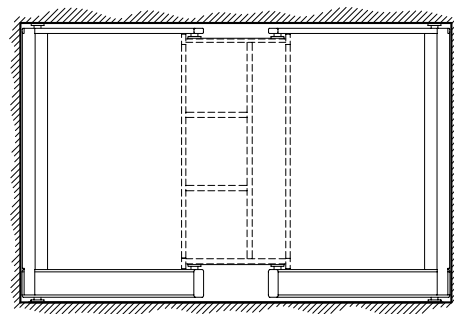
detail A



top extended

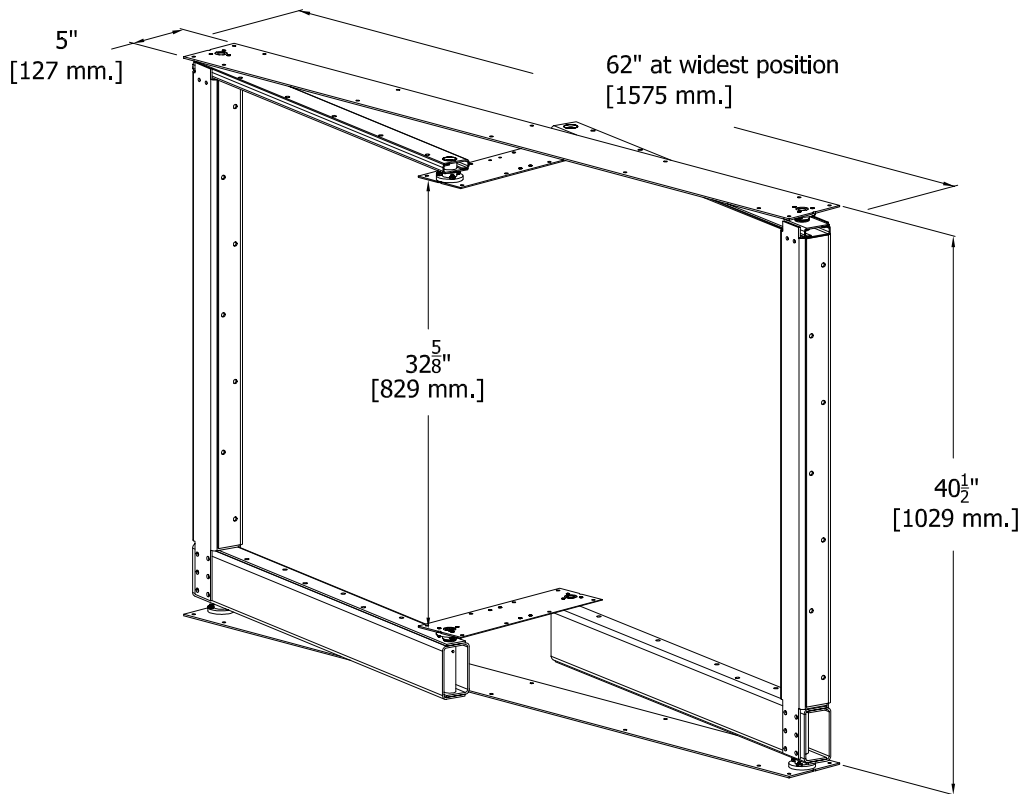


side



front

* 40 1/2" - 40 3/4" [1029 mm. - 1035 mm.] for TR-01
 42 1/4" - 42 1/2" [1080 mm. - 1076 mm.] for TR-02



- Build rough opening to recommended specifications for a fluid swing motion.
- Drawings shown for illustration purposes and are not to scale.
- Though screen size is constant, display screen housing outside dimensions vary between manufacturers. Verify entire screen will fit in inner case.
- In freestanding furniture applications, center of gravity shifts forward as Gyre rotates. At full extension the unit's center of gravity extends ahead of mounting rails. Center of gravity must remain within the footprint of the base at all times to prevent injury from tipping. *Customer assumes all responsibility to insure a safe installation and will certify that their Gyre-equipped furniture passes all tip tests for their respective industries.*
- In freestanding furniture applications, entire cabinet must be anchored to wall to prevent injury from tipping.
- All parts made and assembled in the US.
- Furniture designs, layouts and plans are available at www.reversica.com.

| Gyre 6300 | Articulating Trim Options | |
|--------------------------------|---|-------------------|
| Rough opening | TR-01 out/out | TR-02 out/in |
| Overall width | 62 1/2" min. | 64 1/2" min. |
| Overall height | 40 1/2" - 40 3/4" | 42 1/4" - 42 1/2" |
| Overall depth | 17 1/2" min. overall 7" min. behind rail | |
| Inner case dimensions | | |
| Inner case width | 52" typ. | |
| Inner case height | 32 5/8" case, 34" max. with trim | |
| Inner case depth | 15 3/4" typ. | |
| Weight of hardware | approx. 110 lbs. | |
| Maximum load, incl. inner case | 375 lbs. | |

Gyre 6300

- **Flexible screen positioning** Unlike a lift system, the Gyre allows your screen to be placed at whatever height you'd like, for an optimum viewing experience.
- **Mechanical simplicity** At its heart the Gyre has three moving parts meaning there are fewer things to break and years of troublefree service.
- **Room below for components** Lift systems restrict the use of space. The Gyre enhances space since it swings outward like a door, letting you put your components below the screen again.
- **Heavy duty** The Gyre is rated to hold up to 375 lbs. That's a lot of reading.
- **180 in 18** The Gyre swings 180° in a depth of 18" while allowing you to use the space behind the flat screen. No other solution gives you this flexibility to use space better.
- **Proven cable management** Uses the same articulated wire conduit design as in semiconductor manufacturing ensuring thousands of cycles and no tangled cables.
- **Looks better in the room** Free your inner interior designer. Don't design around your TV—simply twist it and hide it. Display your library, double your space and reinvent your room.

Reversica

Reversica Design, Inc. was founded in 2004 based on a unique motion hardware system that doubles the usefulness of the products it's built into. Located in Santa Cruz, California, near the heart of Silicon Valley, Reversica is compelling individuals and companies to Use Space Better, a motto that drives their design process. Currently, Reversica is working with nationwide furniture companies and local businesses to develop entertainment centers, dining room tables, office furniture, and a host of other products that reconfigure in unusual and unexpected ways.

Reversica's background is in mechanical design engineering and manufacturing with decades of experience in mechanisms and automation for numerous Silicon Valley companies. They bring a fresh, outside-the-norm perspective to the furniture industry. From concept to prototype to production-level manufacturing, Reversica is positioned as the company to revolutionize the way the world uses space.

